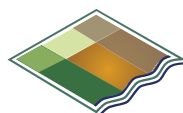




ADVISER



MANAGER

Goings on in the Back Paddock

Useful tips—Maps & Actual data

Maps for SA, QLD, NT and Tas

DESPITE many Back Paddock users being daunted by the thought of ordering Digital Aerial images of farms, Warwick Date, Customer Solutions Manager with Back Paddock said it's a very easy process.

He said the most important issue is to order the correct areas at high-resolution definition. Previous issues of "Goings on in the Back Paddock" have explained the process of ordering these images for farms in NSW, Vic and WA.

Warwick said the easiest way to obtain the image is to give him the details of the farm areas required. He can then obtain a price from the relevant supplier and, if approved by the Back Paddock user, he can complete the ordering and delivery process.

All that is required is to email Warwick on wdate@nutrientms.com.au for each land title required, state the Parish, Lot and DP numbers which is usually stated on all rate notices.

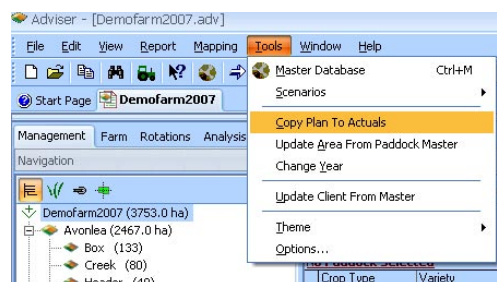
Using Actuals to create input history

By now most winter crop users would have completed their farming plans for the year. A unique feature of Back Paddock is to keep the plan and make any adjustments to applied inputs/operations in the "Actual mode", not "Plan" mode. The program automatically defaults to Plan mode and the current calendar year so users need to click the screen over to "Actual" mode to make any alterations.



Firstly users need to copy the information from the Plan to Actuals. This can be done in two ways;

1. Select the file name in the Management tab navigational tree the select Tools>Copy Plan to Actuals>Yes (this is not reversible)



2. Rather than select all items to copy from all farms and paddocks, individual sections (say Fertilisers, Sprays, Operations or Production per paddock) can be copied by selecting the "Copy Plan to Actual" button present in each section.

Fertiliser			
Fertiliser	Area	kg or l/ha	
Granam	133	100	
Nrich 23.14	444	133	120
Soil test	120	133	

Actuals data needs to be present, as this data becomes the history so that past performance, chemical/fertiliser applications can be traced. The Actuals section also is very useful as a spray diary and has been used to satisfy the Quality Assurance documentation required when using farm chemicals.

Next Issue

- ▶ Importing maps explained
- ▶ Back Paddock welcomed by Landmark
- ▶ Software helping improve viticulture productivity
- ▶ Adviser building better relationships in WA
- ▶ Useful tips

BACK PADDOCK
SOFTWARE

For more information about Goings on in the Back Paddock contact:

Warwick Date Customer Solutions
BACK PADDOCK SOFTWARE
PO Box 8111,
Griffith East. New South Wales 2680 Australia
Telephone: +61 2 69 647 866, Mobile: 0427 557166,
Fax +61 2 69 642 941 Sales & Support: 1800 557166
Email: wdate@nutrientms.com.au

Latest Version 8.5.6.0

Victorian agronomist/agricultural consultant lauds long term planning benefits with clients

VICTORIAN agronomist Ian Delmenico has had so much success with Back Paddock Software that he is now advising all of his clients to purchase the company's program, and for some of his bigger clients he is buying a subscription for them.

Ian, of Crop-Rite at Swan Hill, uses the Back Paddock Software Adviser program. He said it enabled simple, accurate record keeping, and this made it so much easier to establish long-term plans with clients.

"The clients use the Manager software and it is just so easy now for me to work with them and for them to work with me because we both have an easy-to-understand plan to follow," Ian said.

"In the past I would have records of what I advised them to do that differed to what was actually done and when it was carried out.

"Now we plan what we are going to do and they enter the information into the "Actuals" side of the program as it is carried out with the correct date applied, allowing a true record of events and time of application to be recorded.

The client's file is always kept up to date by the client and is shared with Ian when planning and reviewing is required.

"That way we both have the same information that we can refer to during the year and there is no confusion."

Ian, who has been using the Back Paddock Software program for three years, said the analysis page was very useful.

"It is important because it gives you a snapshot of what you are doing."

"That snapshot can then be used to see where the client is sitting budget wise and if adjustments need to be made, rather than getting to the end of the year and finding out those adjustments should have been made earlier."

He said the "scenario manager" within the program was also a feature he used significantly.

"It allows you to very quickly alter crop rotations and inputs, and to view them and adapt to the season ahead."

"So you might put in some canola or pulse crops, and then do an analysis on it and find that something needs to be dropped out.

"It provides direction on whether to go with the higher risk crops or the lower risk crops."



Victorian agronomist Ian Delmenico, of Crop-Rite at Swan Hill, is advising all of his clients to purchase the Back Paddock Software Manager program.

Ian said the Back Paddock Software programs were constantly evolving to stay in touch with changing farming systems.

"One feature that is going to be very useful in the future is the Water Usage Efficiency (WUE) feature," he said.

"The majority of my clients are broadacre cereal farmers that also grow a portion of legumes, and I work with a group of irrigators who have overhead pivots and border check layouts, so this WUE is going to help their planning greatly.

"To date I have been keeping all their water usage records on my own database, but I will incorporate it into the software soon.

"It will really help in ranking paddocks and how much water they use, as well as water usage from farm to farm.

"A couple of clients have different properties and so there are different rainfall figures to deal with, and this is where the ease of use of the software will come into its own for determining water efficiency of paddocks within those properties and being able to plan ahead for potential yields."

Ian also has clients who require strict record keeping for quality assurance programs.

"We have already had word of the Japanese export hay market tending more toward quality assurance and that they will be looking for 24-month plant back

periods on Lontrel. To work that far ahead you need to have effective historical and future planning systems in place."

He said the flexibility of Back Paddock Software to assist users was also refreshing.

"I have spoken to them about streamlining the software to meet the individual needs of some of my bigger clients and they are very responsive to that."

"Obviously we always want changes made straight away and that's a near impossibility, but they take feedback on board and they do make the changes," Ian said.

Update to Version 8.5.6.0

BEFORE commencing work with your Back Paddock Software program, it is important you are running the latest version of the software.

To check that you are, select 'Check for updates' under the 'Help' command and follow the prompts. You will be amazed with the robustness of this new version

A tool for managing herbicide resistance

MANAGING herbicide resistance in Western Australia's northern wheatbelt requires accurate and efficient record keeping and forward planning of chemical use.

Multiple resistance in problem weeds such as radish and ryegrass has resulted in growers having to manage the rotation of herbicides more stringently than ever before.

Owen Mann, senior agronomist with CRT Geraldton agent, Great Northern Rural Services, has witnessed the increase in resistance first-hand, and he uses the Back Paddock Software program to guide clients in effectively managing their chemical use to combat the problem.

"Back Paddock is a fantastic tool in managing the rotation of chemical groups because we can go back over a number of years and see what herbicide groups have been used, and we can set up a strategy of continually changing groups," Owen said.

"By using Back Paddock, it makes it easy for us to manage the rotations. For instance, we can say over the last year paddock X has had Group I and Group B used on it, and that next year we will go to Group I and C.

"Back Paddock is particularly useful for all of the quality assurance issues coming in now. Farmers have to keep track of what they spray, what paddocks they spray in and what rates they spray."

Effective forward planning also enables growers and agronomists to determine what fertiliser inputs will be required for the coming season.

"It is a great tool to sit down with a farmer before the season to work out where we are going, not only with herbicide but also with fertiliser use," Owen said.

"We buy all our fertiliser in September-October the year before it is used. You have to be able to sit down and work out a paddock plan for the following year so you know what inputs you will need.

"This allows farmers to be proactive rather than reactive when buying chemicals. For instance, they can work out they need 2000 litres of product X, so instead of buying one drum at a time they can pick it up all in one go."

The Back Paddock Software program provides accurate budgeting, helping



Owen Mann, senior agronomist with CRT Geraldton agent, Great Northern Rural Services.



growers and industry professionals make educated decisions to maximise profits.

"We are going from broad-scale budgeting down to very site specific now," Owen said.

"We can work out a budget and say these crops in these paddocks are going to be worthwhile putting in, as well as what will not be worth putting in."

He identified the versatility of the Back Paddock Software program as one of its main strengths, with the ability to do broad plans across whole farming enterprises down to very specific sections of a farm.

"The initial data is easy to put in and you can use it on the scale you want, big or small."

"The software has evolved well and kept up with what is happening in agriculture, and it is more relevant now than when I first started using it nearly six years ago.

"I have watched it progress into mapping and into the site specific management of paddocks, and even parts of paddocks.

"You can do a single paddock plan right through to mapping of a large enterprise and down to site specific soil testing. It is a great management tool."

The software is designed for quick and accurate input of data, allowing agronomists like Owen to spend more time with clients and less time staring at a monitor.

"Back Paddock is very easy to use. I have used another program before and the initial data you have to put into it is huge, and it has had so many additions and updates to it over time. It has lost touch with the reason it was originally made."

"Back Paddock is a good company to deal with in terms of support – they are easy and friendly.

"My computer crashed not long ago and we had to have it fixed, and our IT technician said Back Paddock were excellent to deal with," Owen said.

Adviser an excellent database tool at Pittsworth



Queensland agronomist Craig Ward, Elders Pittsworth, says the new mapping component with the Adviser program will be a major benefit for clients.

DESPITE being only a recent user of Back Paddock Software's Adviser program, Elders Pittsworth agronomist Craig Ward says it is already a hit with the company's clients.

Pittsworth is in the heart of the Darling Downs in Queensland, and Craig works with a large range of crop types including oilseed, grain and pulse crops.

He said the Adviser program did have to be modified to deal with a double cropping situation, but it was performing well now.

"We haven't been using it for that long, but so far it is proving itself to be a very good database tool," Craig said.

"At the moment we are just trying to build up a good database in the system for each client and then we can really start to use the program to plan ahead and set up some interesting scenarios for clients."

He said the program would "come into its own" in regard to recording and forecasting information for a grower.

"We can use it as a tool to forecast ahead and find out what inputs we may be missing and what we should be recommending to the client."

Craig said the program would also help reduce the time spent on client reports.

"It has already enabled us to centralise and simplify records and that information is now interchangeable among all the agronomists within the branch," he said.

"The reports it provides are very easy to understand and these can be presented to the clients, which then puts more onus on them to stick to the plan going forward because they have everything in an easy-to-read format.

Contact us:

Freecall Helpdesk: 1800 557 166

The Helpdesk is open Monday to Friday from 7am to 7pm (AEST)

Email: mail@backpaddock.com.au • **Web:** www.backpaddock.com.au • **Fax:** 07 3821 3544

Post: PO Box 823 • Cleveland Qld 4163