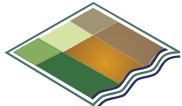




ADVISER



MANAGER



MAPPER

Goings on in the Back Paddock

Back Paddock Training in Perth

A Back Paddock training session is being held in Perth on Thursday 20th July 2006 for farmers with the Manager program. It is being held from 10am – 4pm and will cover the following topics;

- ▶ Setting up a farm plan
- ▶ Managing scenarios
- ▶ Utilising the copy paddock data section
- ▶ Understanding the Master Data Base – defaults and ability to customise
- ▶ Configuring reports
- ▶ Updating from Master Data Base and “Find and Replace” functions
- ▶ Mapping – loading, defining, viewing, creating layers, printing

Registrations are now open for this training session. The cost is \$400 plus GST with a \$200 FarmBis reimbursement available to eligible participants.

Lunch, tea/coffee and some laptops will be provided. It will be best if you bring your own laptop with your BPS farm file on it.

Bookings are on a first in basis. Register by contacting Warwick Date by phone 0427 557 166, email wdate@nutrientms.com.au or by selecting (mouse click) the type of training required either Adviser or Manager. An email will be generated for you to complete.

[Adviser Training Request](#)

[Manager Training Request](#)

A training session specifically for consultants and commercial advisers will be held in Perth on Monday 17th July. Again contact Warwick Date to register.

More training sessions are planned in each state - you can express your interest now by contacting Warwick and letting him know your preferred location for training.



Monthly Rainfall Information

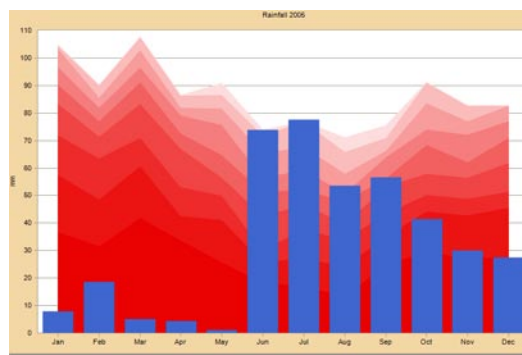
Back Paddock software can now record daily and monthly rainfall figures. This function is most useful when the program calculates Water Use Efficiencies for various crop types. The software has the ability to display the information in a month-by-month bar graph and a line graph with deciles of rainfall - that is groupings of data from the bottom 10% of rainfall years up to the top 10% of years

That's all very well you say if you have the historical data!!! We would like to give all licensed users historical monthly rainfall data for a Bureau of Meteorology site.

Once we have provided you with the data it takes 10 seconds to download it into your program. If you're interested email Warwick Date wdate@nutrientms.com.au with your 1st and 2nd choices for Bureau of Meteorology sites or a GPS location on your farm.

Warwick will email you the required file, easy to follow download instructions and further instructions on how to navigate around the rainfall section.

If you are interested email Warwick Date by selecting (mouse click) [Request Rainfall Data](#)



Monthly Rainfall, 2005 Griffith NSW and deciles (Source Bureau of Meteorology)

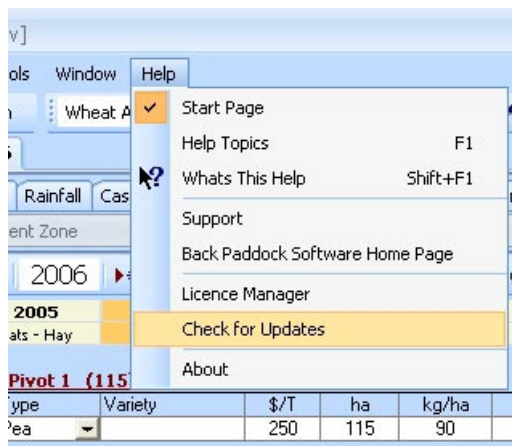
Over the page:

- ▶ Nutrient TIP
- ▶ Sharefarmer functionality
- ▶ User tips

User Tips

Master Data Base

Each and every new user is gifted an up-to-date Master Data Base with a very comprehensive listing of varieties, chemicals, fertilisers, operations and their associated costing. If you have access to a different Master Data Base that you would like to use, open Master Data Base, select 'File'-Set Master Data Base-Browse to find the file, usually in 'My Documents'-'>'Back Paddock Software'-'>'Master Data'. Select 'Open' > 'Done'. If you need to go back to your old Master Data Base just follow the same procedure and select it.

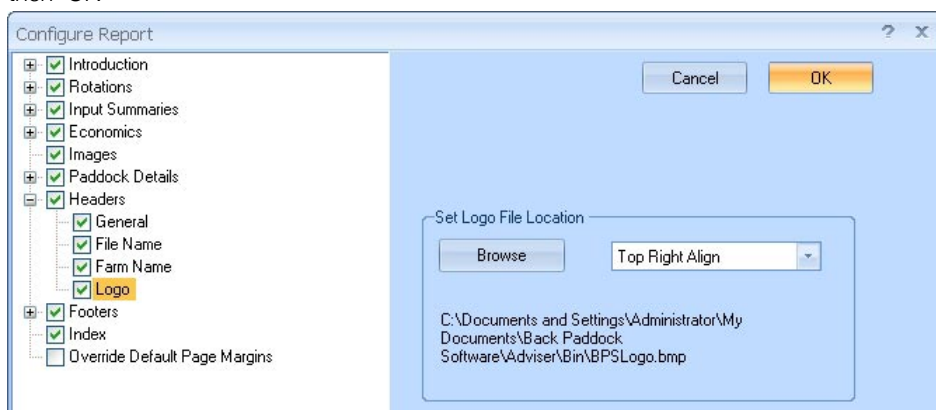


Latest Version

To ensure you have all the features of the software you need to be using version 8.0.0.33. Check your version by going on line and opening the program, select 'Help' > "Check for Updates" > 'Next' > 'Run' then follow the prompts.

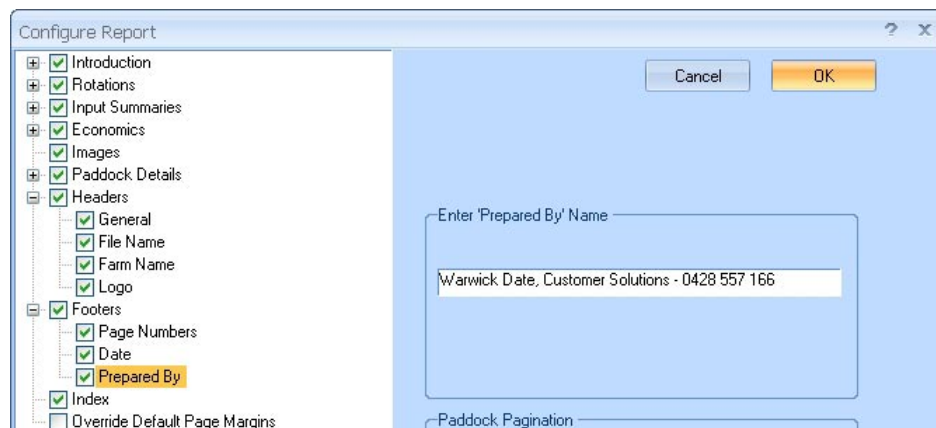
Inserting Logos

Inserting your employer or farm's logo can enhance the presentation of your reports. This is easily done using a 'bmp' file of your logo. To insert your logo; select 'Reports'-'>'Setup'-'>'Header'. Tick the box and expand, then select 'Browse' - select the file-'Open' then 'OK'



Inserting your name

Again the report looks very impressive when your name appears as footer on each page. The procedure is very similar to 'Inserting a Logo and is; 'Reports'-'>'Setup'-'>'Footer'-tick the box and expand then type your name and brief details in the cell on the middle right then 'OK'



Sharefarmer Functionality

Hot off the press is the ability to accommodate sharefarmer activities. The program now has the ability to split both income and costs on a user-defined percentage.

To complement this highly sort after feature is a selection in the report section to produce a sharefarmer report. More on this in the next issue.

Nutrient TIP

Mineralisation is a crucial soil biological function in which organically bound nutrients are converted into plant available mineral forms.

Mineralisation occurs in the soil provided there is sufficient warmth and moisture to allow the soil biological organisms to grow and multiply. In many soils availability of nitrogen and sulphur is significantly influenced by mineralisation.

For nitrogen, mineralisation rates of up to 4 kg/ha/day have been recorded in some cropping systems.

In temperate areas, autumn and spring are key periods of mineralisation while in subtropical and tropical areas, conditions are generally most favourable during summer.

The key factors affecting the quantity of nutrient released by mineralisation are the quantity of organic matter and the mineral stable nutrient content of the organic matter, while the temperature and rainfall pattern regulate when mineralisation occurs



Matt Coffey, Agronomist, Elders Yarrowonga, Victoria inspecting wheat nutrition and mineralisation trials

Contact us:

Freecall Helpdesk: 1800 557 166

The Helpdesk is open Monday to Friday from 7am to 7pm (AEST)

Email: mail@backpaddock.com.au • Web: www.backpaddock.com.au • Fax: 07 3206 2135

Post: PO Box 823 • Cleveland Qld 4163